
“One dependable finisher for your concrete

Project References

A



Superflat Floor Specialist

**ASHFORD
FORMULA™**



A



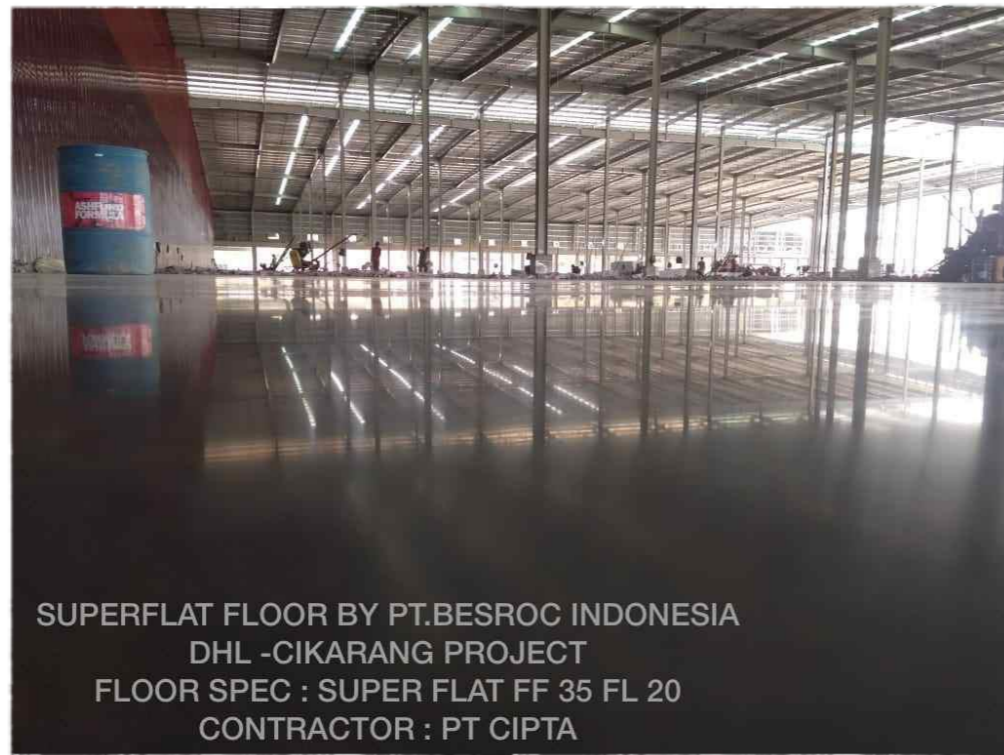
Tahun	Proyek	Kategori	Luas (m ²)
2007	ROMAN CERAMIC INDONESIA – NGORO MOJOKERTO / PT MURINDA IRON STEEL	SUPERFLAT FF75	10.000M2
2007	PT KDM – PURWOSARI / PT TATA MULIA	SUPERFLAT FF50	25.000M2
2008	CARGO KUALANAMU SUMUT / PT ADHIKARYA	SUPERFLAT	8.500M2
2008	GUDANG ENSEVAL – PEMATANG SIANTAR	SUPERFLAT	2.500M2
2009	TORABIKA	FLATFLOOR	27.000 M2
2009	GUDANG ENSEVAL - JEMBER	SUPERFLAT	3.000M2
2009	MONSANTO – PURWOSARI JAWA TIMUR	SUPERFLAT	7.500M2
2010	KALBEFARMA - CIKARANG	FLATFLOOR FF40	3.000M2
2010	GUDANG ENSEVAL - PULOGADUNG	SUPERFLAT FF40	5.000M2
2010	ALFA DISTRIBUTION CENTRE - JEMBER	SUPERFLAT FF60	10.000M2
2010	ALFA DISTRIBUTION CENTRE - MAKASAR	SUPERFLAT FF60	10.000M2
2011	ALFA DISTRIBUTION CCENTRE – SIDOARJO JAWA TIMUR	SUPERFLAT FF60	10.000M2
2011	SYGENTA – PASURUAN JAWA TIMUR	SUPERFLAT	2.000M2
2011	GUDANG ENSEVAL - SOLO	FLATFLOOR FF40	3.000M2
2011	GUDANG ENSEVAL - CIREBON	FLATFLOOR FF40	3.000M2
2011	GUDANG ENSEVAL - BANJARMASIN	FLATFLOOR FF40	3.000M2
2011	ZARASKIN Tahap 1	SUPERFLAT	13.200M2
2011	GUDANG ENSEVAL – BANDA ACEH	FLATFLOOR FF40	3.000M2
2011	ALFA DISTRIBUTION CENTRE	SUPERFLAT FF60	13.000M2
2011	ROMAN CERAMIC INDONESIA Tahap 2	SUPERFLAT FF75	5.000M2
2011	MITSUBHA – JATAKE / PT MURINDA IRON STEEL	FLATFLOOR wt EPOXY	10.000M2
2011	INDOMAGURO COLD STORAGE	SUPERFLAT	5.000M2
2011	SYNCRUM – MM2100 / PT SINAR MUTIARA	SUPERFLAT FF76	8.000M2
2012	ALFA DISTRIBUTION CENTRE - CIREBON	SUPERFLAT FF60	6.500M2
2012	KAMADJAYA - MEDAN	SUPERFLAT	12.000M2
2012	ALFA DISTRIBUTION CENTRE - BANDUNG	SUPERFLAT FF60	5.200M2
2012	UNILEVER MEGA DC – MM2100 CIBITUNG / PT MULTIKON	SUPERFLAT	90.000M2
2012	GUDANG ENSEVAL – SEMPIDI BALI	FLATFLOOR FF40	3.400M2
2012	MITSUBHA 2 (MINA 2) – CIKANDE / PT MURINDA IRON STEEL	SUPERFLAT	8.500M2
2012	ALFA DISTRIBUTION CENTRE –CIBINONG / PT SINAR MUTIARA	SUPERFLAT FF60	12.230M2
2012	ALFA DISTRIBUTION CENTRE – KIM 3 - MEDAN	SUPERFLAT FF60	8.980M2
2012	MITSUBHA 3 (MINA 3) – CIKANDE / PT PENTA OCEAN	SUPERFLAT	7.900M2
2012	COCA COLA AMATYL - CIBITUNG	SUPERFLAT	35.000M2
2012	HERO DISTRIBUTION CENTRE - CIBITUNG	SUPERFLAT	9.000M2
2012	YAMAHA – PASURUAN / PT TATA MULIA	SUPERFLAT	1.500M2
2012	CHAROEN PHOKPAN – NGORO , MOJOKERTO	FLATFLOOR	5.000M2
2012	NUTRIFOOD – MM2100, CIBITUNG / PT WIJAYA KUSUMA CONTRACTOR	SUPERFLAT FF50	5.000M2

Tahun	Proyek	Kategori	Luas (m ²)
2012	LI AND FUNG – MM2100 CIBITUNG / PT MULTIKON	SUPERFLAT FF50	10.000M2
2012	MEGA COLDSRTORAGE – MM2100 CIBITUNG	SUPERFLAT	10.000M2
2012	INDOLAKTO – PURWOSARI, PT TATA MULIA SURABAYA	SUPERFLAT	8
2012	PT CNL – RUNGKUT , SURABAYA	VNA FF100/FL 60	2.000M2
2013	INDONESIA INTERNATIONAL EXHIBITION BUMI SERPONG DAMAI / PT TOTAL BANGUN PERSADA	FLATFLOOR FF30	80.000M2
2013	CATERPILLAR – BATAM / PT LEIGHTON INDONESIA	SUPERFLAT	45.000M2
2013	HANGGAR LION – BATAM / PT MURINDA IRON STEEL	SUPERFLAT FF50	20.000M2
2013	HANGGAR LION TAXIWAY – BATAM / PT MURINDA IRON STEEL	FLATFLOOR FF30	30.000M2
2014	PEKANBARU LOGISTIK CENTRE – PEKANBARU / PT DWI MANUNGGAL	SUPERFLAT	3.000M2
2014	GARUDA FOOD PEKANBARU	SUPERFLAT	5.000M2
2014	GUDANG DJARUM SURABAYA TIMUR – PT WARINGIN	SUPERFLAT FF50	6.000 M2
2014	SCHLUMBERGER – KAWASAN DELTA MAS , CIKARANG	FLATFLOOR	8.000M2
2014	FONTERRA - DELTA MAS / PT LEIGHTON INDONESIA	SUPERFLAT FF50	5.000M2
2014	SHELL – MARUNDA / PT ENCONA – PT JGC	SUPERFLAT FF60/40	9.000M2
2014	PIRELLI – SUBANG, JAWA BARAT	SUPERFLAT FF65 & FM3	40.000M2
2014	COCA COLA AMATYL - SEMARANG	SUPERFLAT FF50	15,000M2
2014	PLASINDO – KERAWANG / PT DELTA BAJA MASA	VNA FF100/FL60	5.000M2
2014	BAYER – CIMANGGIS / PT IRAWAN PUTRA PRIMA	VNA FF100/FL 60	2.500M2
2014	MEGA COLDSTORAGE – MUARA BARU	SUPERFLAT	6.000M2
2014	WIK – BATAM / PT HJS	SUPERFLAT	9.000M2
2014	ALFA DISTRIBUTION CENTRE - LAMPUNG	SUPERFLAT FF60	11.000M2
2014	AUSTRALIAN EMBASSY – JAKARTA / PT LEIGHTON – TOTAL BANGUN PERSADA	FLATFLOOR	55.000M2
2014	GUDANG LOGISTIK SAMSUNG – MARUNDA / PT TRIJAYA BAJA	SUPERFLAT 3mm/3m	27.000M2
2015	NUTRIFOOD EXT MM2100 – PT MURINDA	SUPERFLAT FF50	4.000 M2
2015	NUTRIFOOD SENTUL – PT WIJAYA KUSUMA CONTRACTOR (WKC)	SUPERFLAT FF50	5.000 M2
2015	NUTRIFOOD CIAWI – PT WIJAYA KUSUMA CONTRACTOR	SUPERFLAT FF50	5.000 M2
2015	PEKANBARU LOGISTIK CENTRE RIAU Phase 2 - PT DWI MANUNGGAL	SUPERFLAT 3mm/3m	7.000 M2
2015	SKM KEDIRI JAWA TIMUR – PT MURINDA IRON STEEL	SUPERFLAT 3mm/3m	35.000 M2
2015	BAMBANG DJAYA – NGORO, JAWA TIMUR	SUPERFLAT 3mm/3m	7.000 M2
2015	OTSUKA TAHAP 2 – LAWANG , JAWA TIMUR	VNA FF100/FL60	3.000 M2
2015	GUDANG CIMANGGIS – WINGS GROUP	SUPERFLAT FF75/FL50	5.000 M2
2015	PLASINDO , WINGS GROUP – CIBITUNG	SUPERFLAT 3mm/3m	3.000 M2
2015	GUDANG WINGS – BADAU, BELITUNG – BABEL	SUPERFLAT 3mm/3m	5.000 M2
2015	GUDANG WINGS – KERINCI, PEKANBARU	SUPERFLAT 3mm/3m	8.000 M2
	0000ooo00000		

Tahun	Proyek	Kategori	Luas (m2)
2016	Gudang Lazada - cimanggis	VNA Floor	-
2016	B- Braun	VNA Floor	-
2016	Tempo – Cirebon	FF 50	-
2016	Matsuya - Bali	FF 50	-
2016	Showroom Catur Griya – Taman Tekno Serpong	FF 50	-
2016	Alfa - Semarang	FF 35	-
2016	Converse - Ciranjang	FF 35	-
2016			
2016			

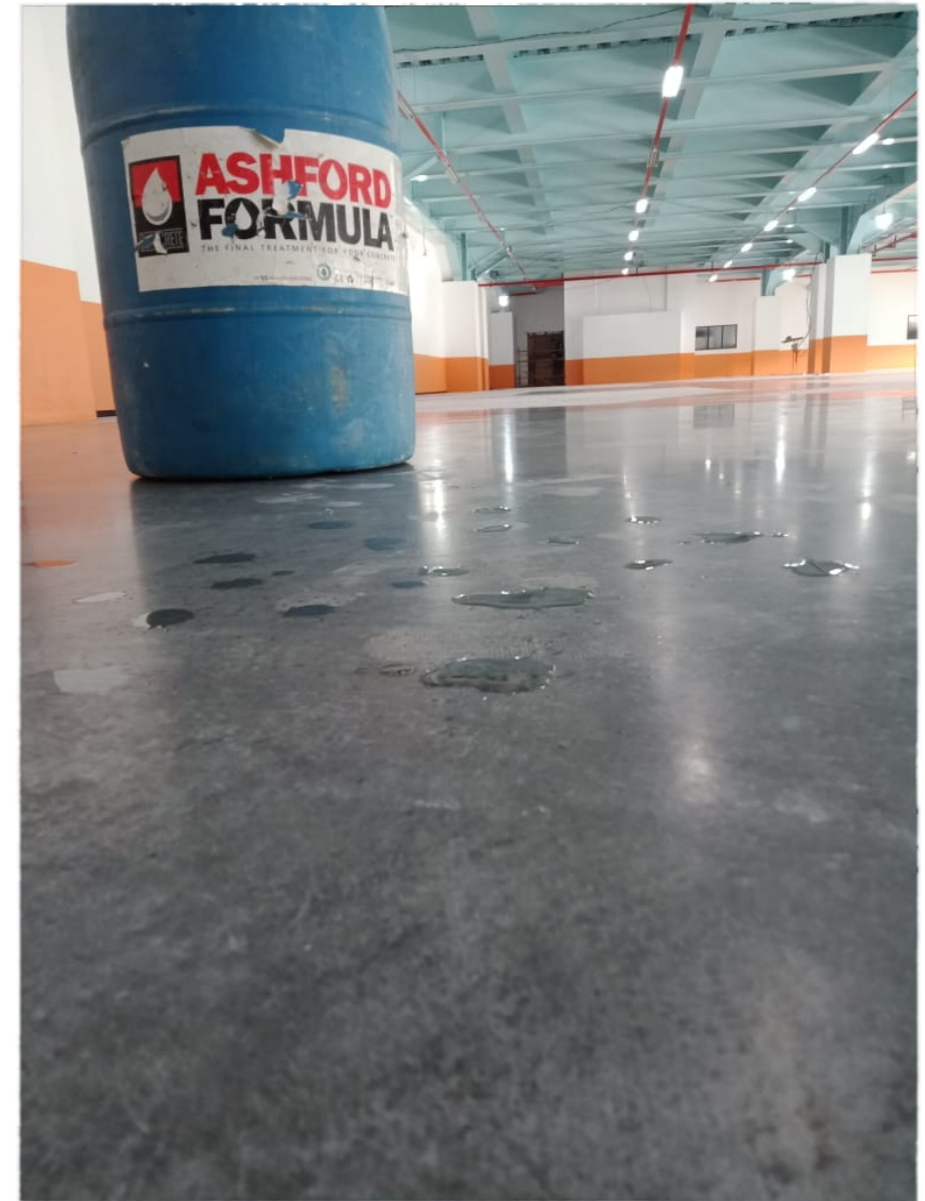
NO	TAHUN	NAMA PROYEK	SPESIFIKASI	VOLUME
1	2016	<i>Coolstorage & Dray Storage Rich, Cikande</i>	FF50	2848 m2
2	2016	<i>Crown (Gudang Arsip) , Cikande</i>	FF 35	1840 m2
3	2017	<i>Warehouse Tempo Scan Pacific , Jember</i>	FF 60	3600 m2
4	2017	<i>Warehouse Asia Paint , Karawang</i>	FF 35	1940 m2
5	2017	<i>Warehouse Spare Part Lion Air , Batam</i>	FF 35	6500 m2
6	2017	<i>Warehouse Tempo scan Pacific , Surabaya</i>	FF 60	2700 m2
7	2017	<i>PT.Golden Tulip Pratama , Surabaya</i>	FF 50	4900 m2
8	2017	<i>PT. Enseval Putra Mega , Depok</i>	FF 50	3400 m2
9	2017	<i>Cold Storage PT Lautan Bahari Sejahtera, Jakarta</i>	FF 50	2760 m2
10	2017	<i>MegaCold Storage , MM2100 Cibitung</i>	FF 50	2830 m2
11	2017	<i>Retindo Jaya Cold Storage, Cikarang</i>	FF 50	8200 m2
12	2017	<i>PT. Sayap Mas Utama , Depo Marunda</i>	FF 35	12900 m2
13	2017	<i>Gudang DC Alfa , Gianyar Bali</i>	FF 35	7600 m2
14	2017	<i>PT.Persada Mutiara Indah (Family Mart) , Cibitung</i>	FF 75	3200 m2
15	2017	<i>New BOF HPC Liquid Uniliver, Jababeka</i>	FF 35	12900 m2
16	2017	<i>PT.Sayap Mas Utama, Depo Majalengka</i>	FF 35	5860 m2
17	2017	<i>PT.Sayap Mas Utama , Depo Garut</i>	FF 35	1700 m2
18	2017	<i>Lumina Pakaging , Trosobo Jawa Timur</i>	VNA	1300 m2
19	2017	<i>DC Alfa Midi , Pasuruna</i>	FF 35	8300 m2
20	2017	<i>DC Alfa , Manado</i>	FF 35	7800 m2
21	2017	<i>Warehouse Uniliver , Makasar</i>	FF 35	10000 m2
22	2017	<i>Warehouse Uniliver , Banjarmasin</i>	FF 35	8500 m2
23	2017	<i>Tissue Culture Laboratorium, Sentul Bogor</i>	FF 35	11.500 m2
24	2017	<i>Mega Cold Storage , Kawasan MM2100 Cibitung</i>	FF 50	8800 m2
25	2017	<i>Asahimas , Dawuhan Karawang Timur</i>	FF 35	4500 m2
26	2017	<i>Warehouse, Teh Tong Tji, Padaharja Tegal</i>	FF 50	2700 m2
27	2017	<i>Warehouse Kalbe Farma , Kawasan EJIP Cikarang</i>	FF 50	1200 m2
28	2018	<i>Enseval Tambun</i>	FF 50	3500 m2
29	2018	<i>Cold Storage Masuya Indonesia</i>	FF 50&FF 35	1400 m2
30	2018	<i>Cold Storage PT.EKA BOGA INTI</i>	FF 50&FF 35	1300 m2
31	2018	<i>PT.Sayap Mas Depo Pontianak</i>	FF 35	8600 m2

P
R
O
J
E
C
T
R
E
F
E
R
E
N
C
E
S



DHL - MMP FF 35 FL 23 & ASHFORD FORMULA

PROJECT REFERENCES



SATNUSA- BATAM FF 35 FL 20 - ASHFORD FORMULA

PROJECT REFERENCES



LOGOS METROLINK - FF35 FL 20 - ASHFORD



MMP WAREHOUSE 14- FF 35 FL 20 - ASHFORD FORMULA



PROJECT REFERENCES



PT.CHINGLUH PASAR KEMIS - FF 50 FL 25

PROJECT REFERENCES



PT. PAO YEN - CIRANJANG FF35 FL 20 - ASHFORD - POLISHED

S
H
E
L
L
M
A
R
U
N
D
A
-
F
F
5
0
F
L
2
5
-
A
S
H
F
O
R
D

WINGS FOOD – JATI ASIH FF35 FL 20 - LIGHT GREY FLOOR HARDENER



Depo Jati Asih
Wings Indonesia & Sayap Mas Utama Group
Concrete floor Finishing by Besroc Indonesia
Spec FF 35

PROJECT REFERENCES



HANGGAR LION AIR - BATAM - FF35 FL20

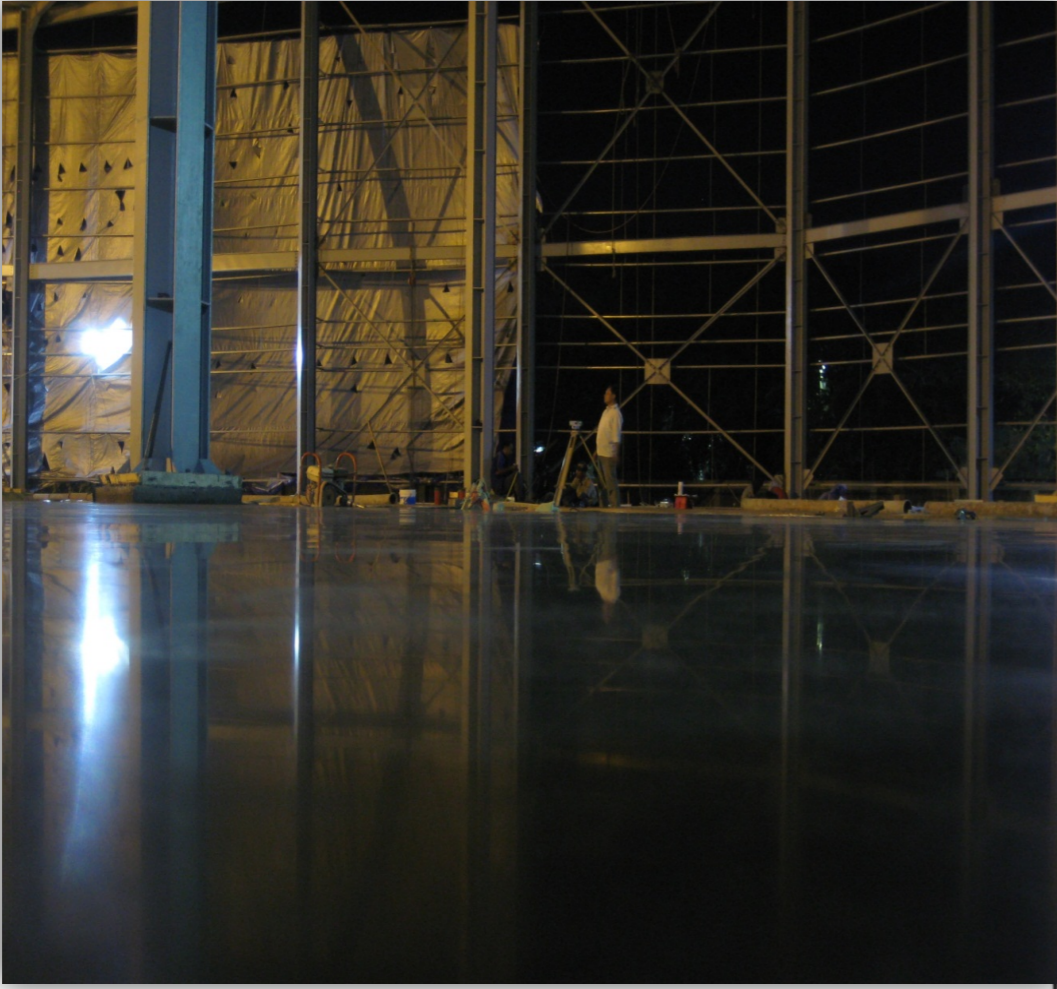
PROJECT REFERENCES



MITHSUBA TANGERANG - FF
35 FL 20 - EPOXY



ROMAN CERAMIC FF 75 FL 40



HERO - FF 50 FL 30





SIAM INDO -BESROC
12 Agt 2019 17:52:07



GUDANG JICO -
DISTRIBUTOR
MIWON= FF 50 FL 30-
ASHFFORDSEMARANG



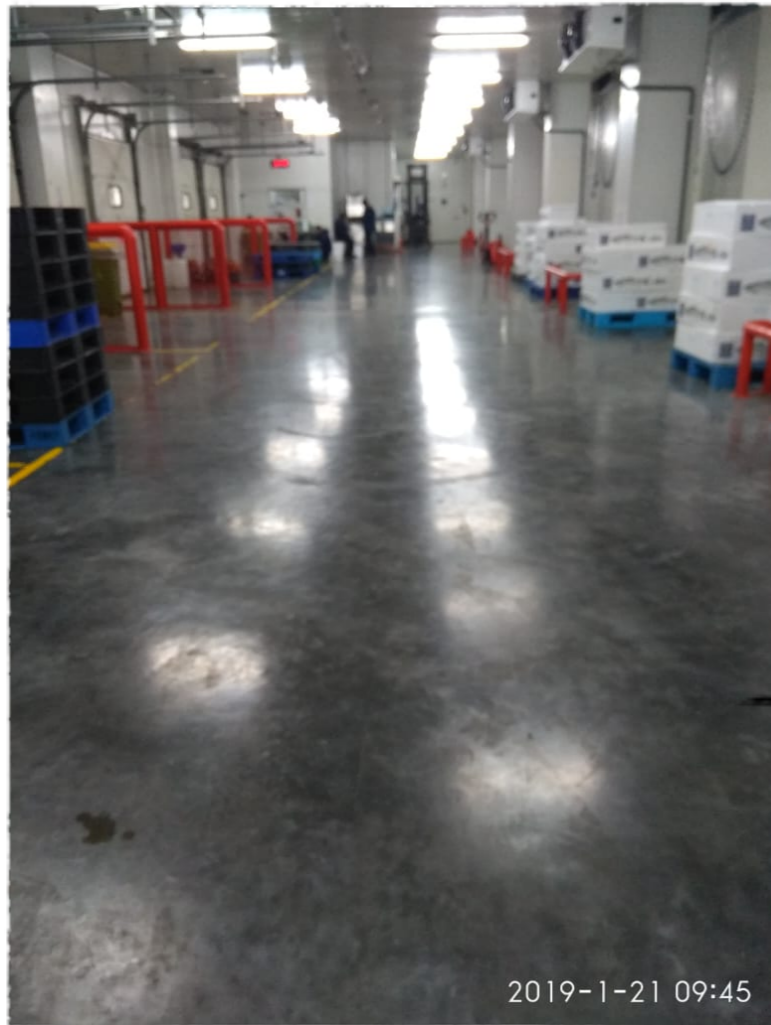
2019-8-3 12:56



GARUDA FOOD -
FF 50 FL 30 - BANDUNG



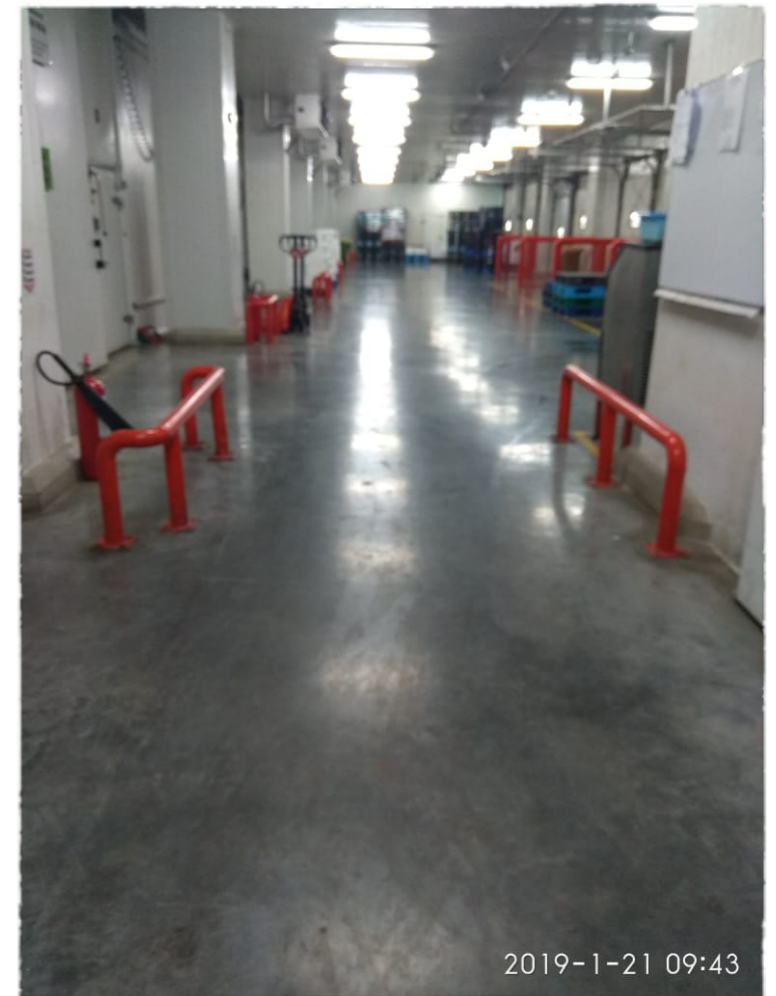
PROJECT REFERENCES



2019-1-21 09:45

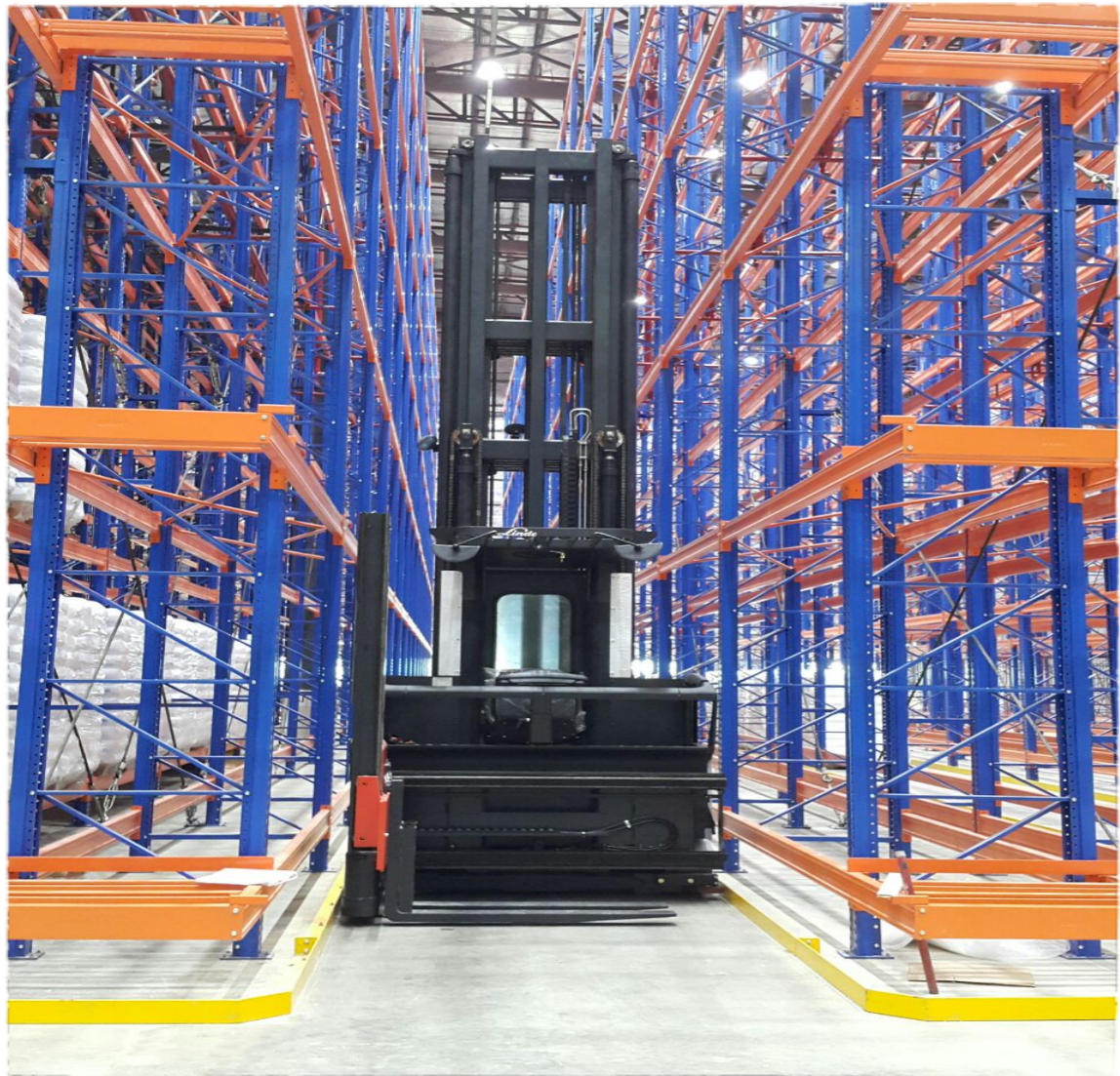


MATSUYA BEKASI - FF 50 FL 35



2019-1-21 09:43

PROJECT REFERENCES



BBRAUN - VNA FLOOR (FF100 FL60)



PROJECT REFERENCES



LAZADA CIMMANGIS- FF 35 FL 20

PROJECT REFERENCES



ASIAN PAINT - FF 35 FL 20





TEMPO WAREHOUSE - FF 35 FL 20



P
R
O
J
E
C
T
R
E
F
E
R
E
N
C
E
S



WIRTHA - VNA FLOOR
(FF 100 FL 60)- PANDAAN

PROJECT REFERENCES



UNILEVER MEGA DC - FF 50 FL 30



PROJECT REFERENCES



CATERPILLAR - FF 35 FL 20 - WIDE POUR- BATAM

PROJECT REFERENCES

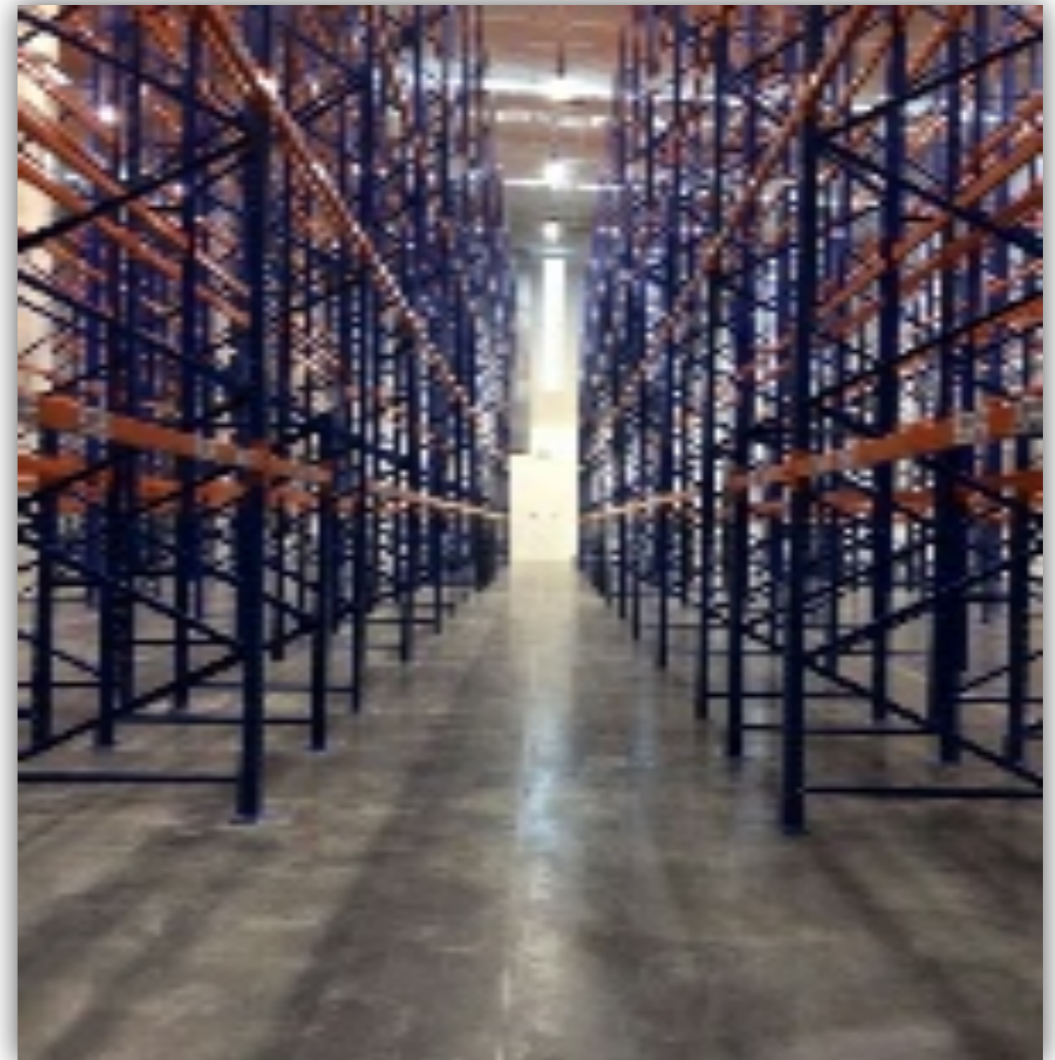


COCA COLA AMATIL & COCA COLA INDONESIA- FF 35 FL 20

PROJECT REFERENCES



OTSUKA - VNA FLOOR FF 100 FL 60



PROJECT REFERENCES



PLAZINDO - VNA FLOOR - FF 100 FL 60 - KEWAWANG

PROJECT REFERENCES



CNL - VNA FLOOR (FF100 FL 60)



PROJECT REFERENCES



ALFA DISTRIBUTION CENTER - FF 50 FL 25

Makasar, Medan, Pekanbaru, Jambi, Palembang, Kerawang, Balaraja Phase 2, Cibinong, Gunung Sindur, Cianjur

PROJECT REFERENCES



SYNCRUM - FF 50 FL 25-CIBITUNG

PROJECT REFERENCES



ENSEVAL - FF 40 FL 25

PROJECT REFERENCES



GUDANG GARAM - FF 50 FL 25

PROJECT REFERENCES



CARGO BANDARA KUALA NAMU - FF 35 FL 20

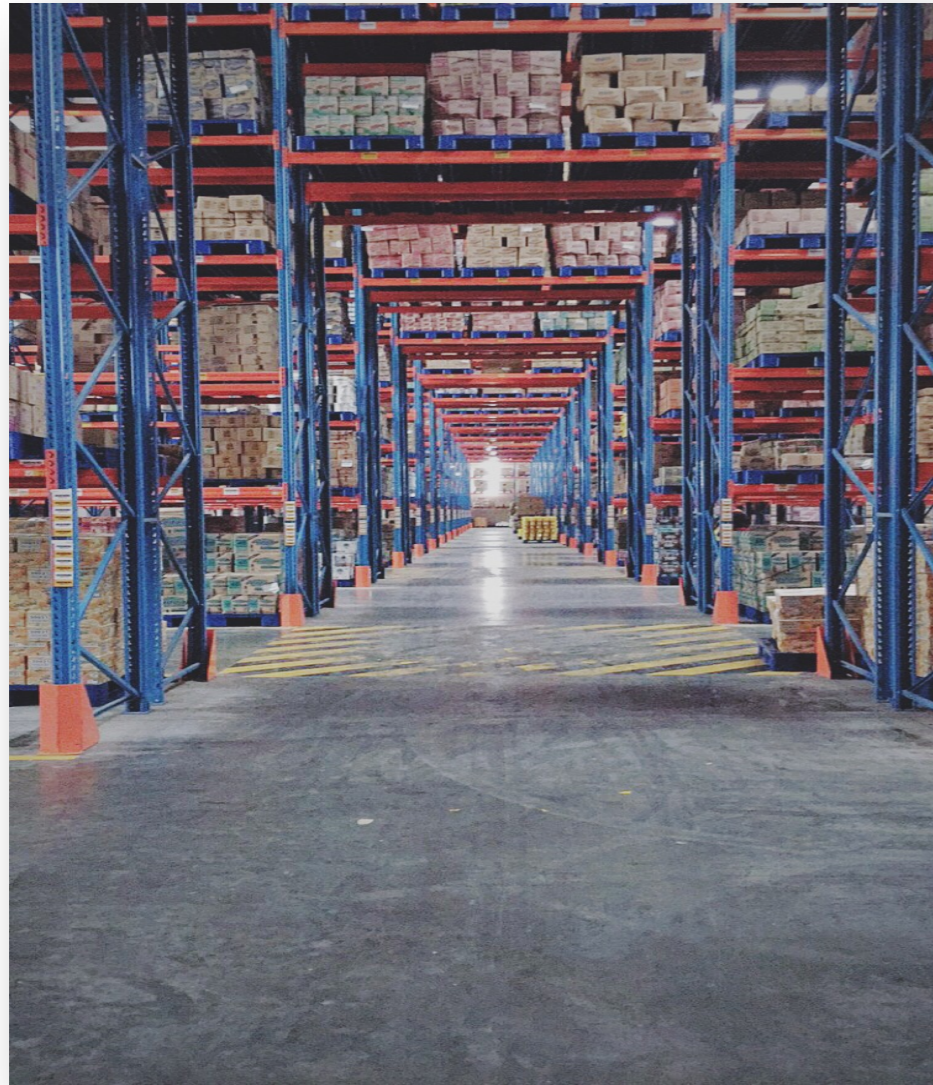
PROJECT REFERENCES

KAMADJAJA - FF 50 FL 25

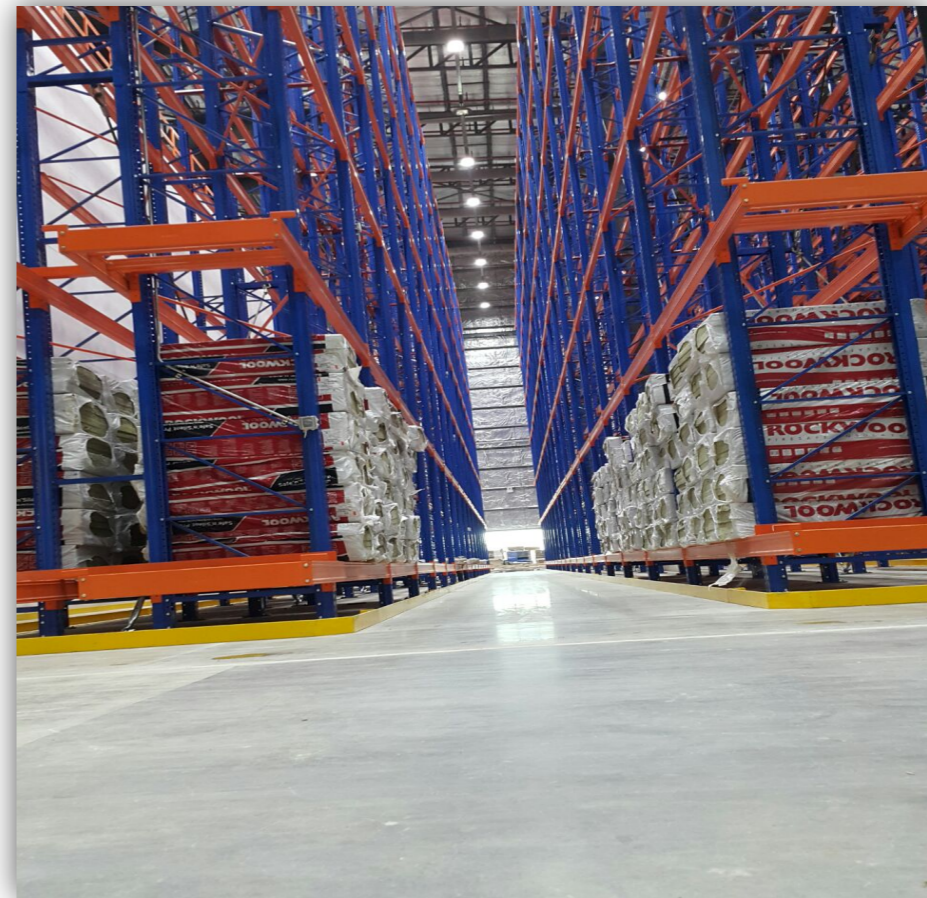


PROJECT REFERENCES

CIMANGGIS WINGS - FF 35 FL 20



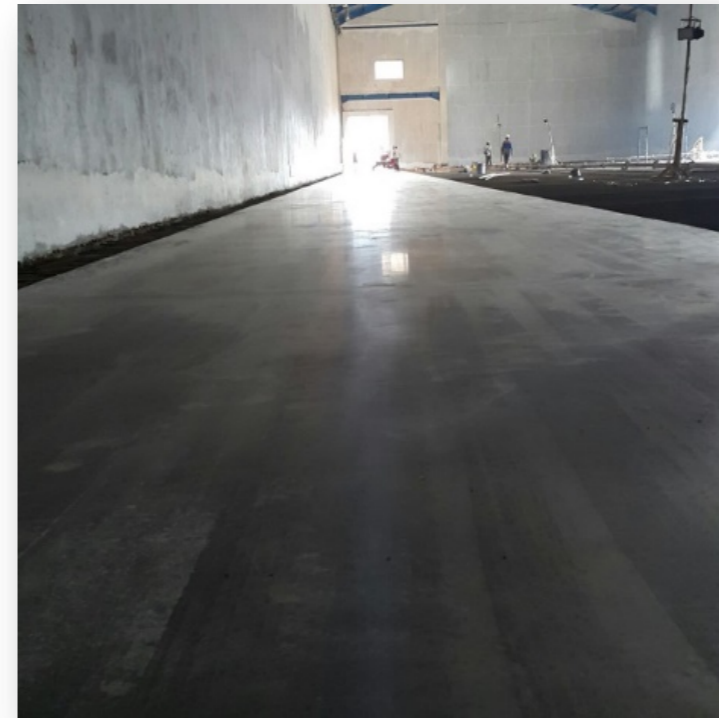
Project : Bbraun
Contractor : PT. Shimzitzu
Spec : VNA – FF 100
Floor Hardener 3 kgs.



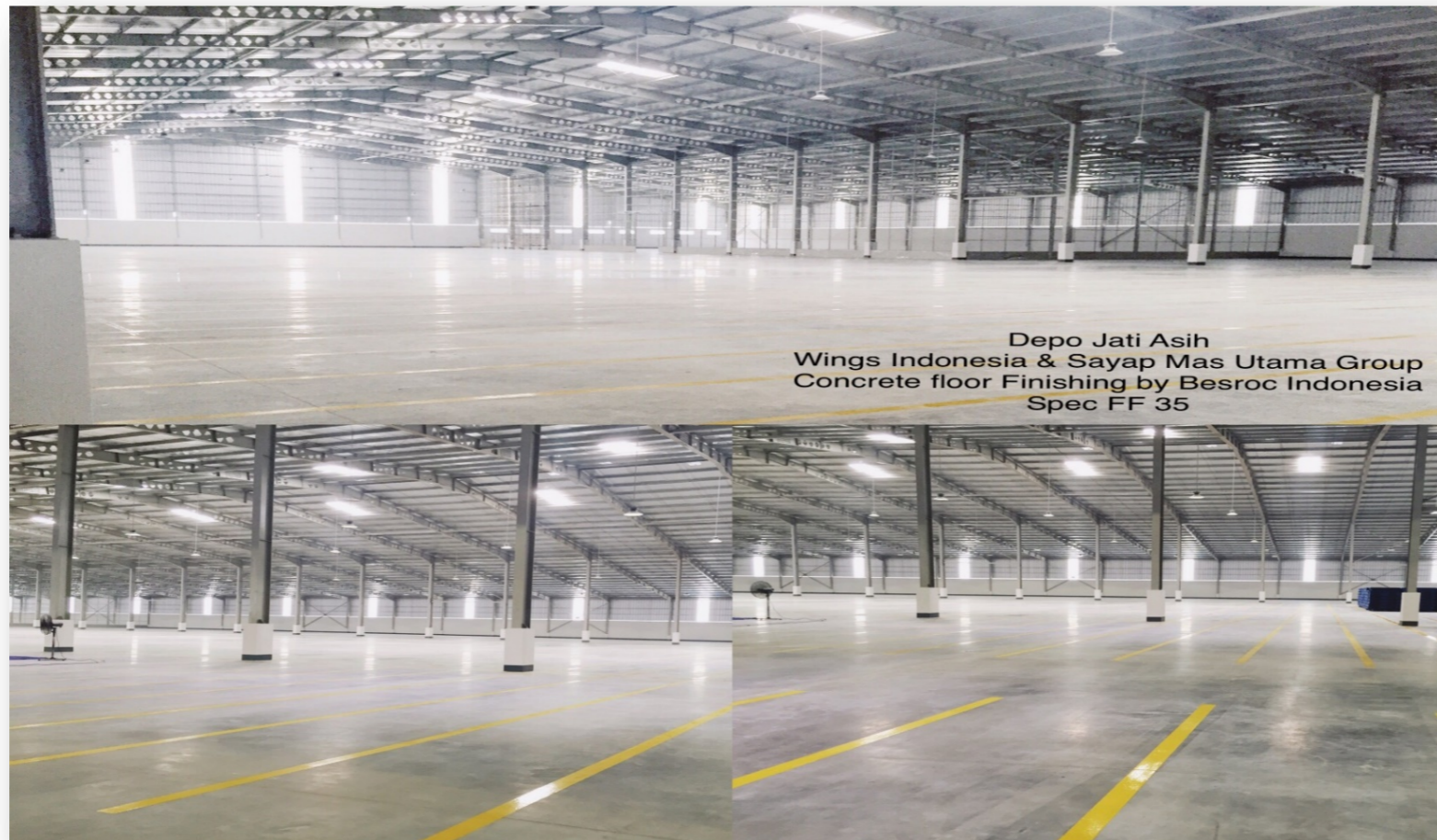
Project : Warehouse Lazada - Cimanggis
Contractor : PT. Total Persada Indonesia
Spec : Basement floor FF 25 & Warehouse FF 35
Floor Hardener 3 kgs.



Project : Widartha Pandaan
Material : Chapdur Natural ex. Sika
Category : VNA Floor
Volume :-



Project : Gudang Jatih Asih distributor
indoraya
Materia : Chapdur Natural ex. Fosroc
Category : Superflat > FF 35
Volume : 13.000 m2



Project:Unilever Mega DC- Cibitung
Spec : FF 50 / FL 25
Main Contractor : Multikon
Volume : 90.000 M2



Project : Caterpillar – Batam

Spec : FF35 / FL 20, Main Contractor : PT Leighton Indonesia

Volume : 45.000 M2



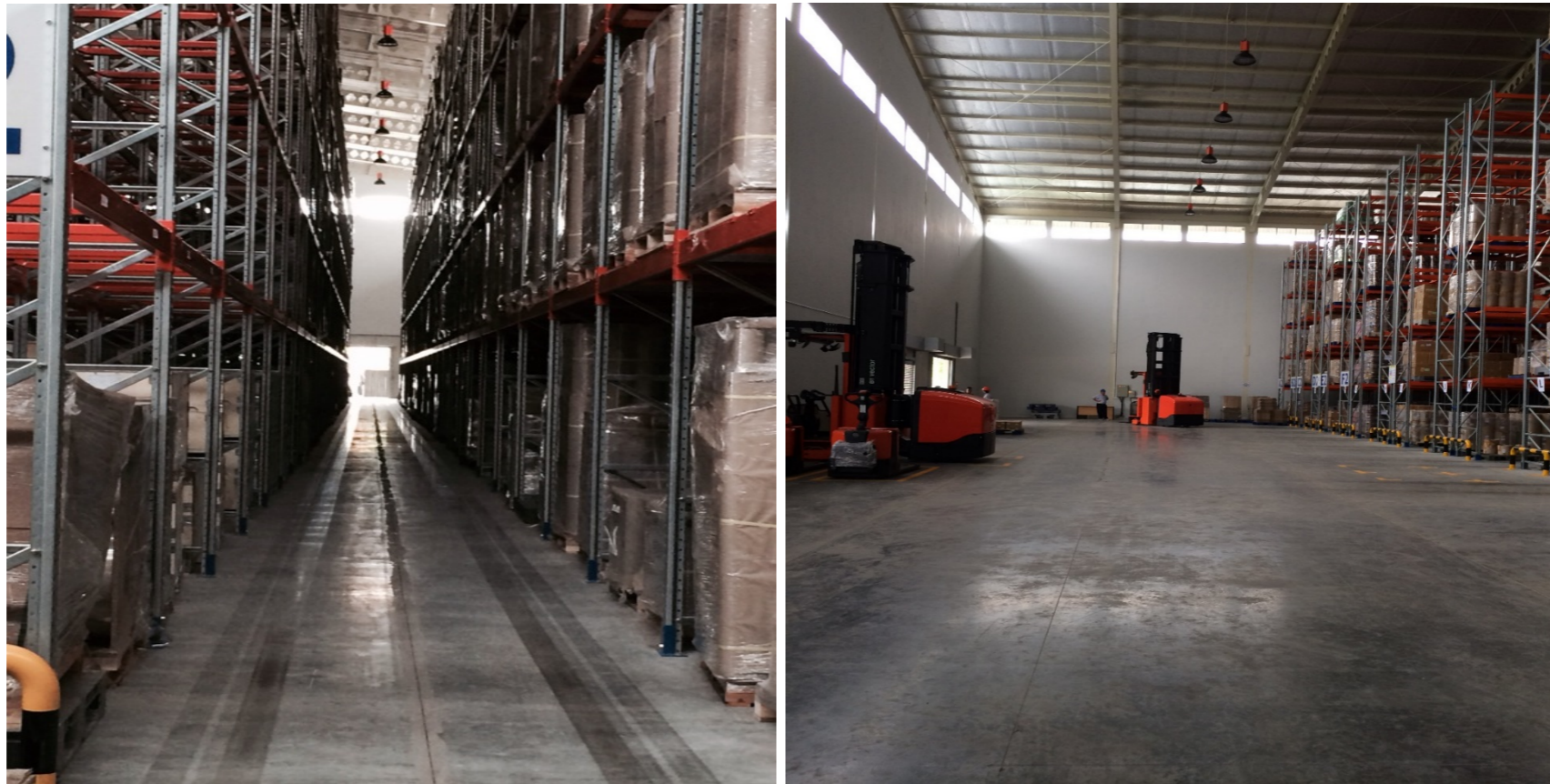
Project: Roman Ceramic Indonesia
Spec : FF75 / FL 40
Main Contractor : PT Murinda Iron Steel
Volume : 15.000 M2,
Ngoro Mojokerto, Jawa Timur



Project : Cocacola Amatl Cibitung and Semarang
Spec : FF 50 / FL , Main Contractor : PT Leighton Indonesia
Volume Cibitung : 35.000M2, Volume Semarang : 15.000 M2



Project : Plasindo – Kerawang
Spec : FF100 / FL50 (VNA Forklift with wireguide)
Main Contractor : PT Delta Baja Masa
Volume : 5.000 M2



Project:CNL – Rungkut Surabaya
Spec : FF 75 / FL 40 (VNA Truck)
Main Contractor : PT Waringin (Surabaya)
Volume : 2.000 M2



Project : ALFA DISTRIBUTION CENTRE

Location : Makasar, Medan, Pekanbaru, Jambi, Palembang, Kerawang,
Balaraja Phase 2, Cibinong, Gunung Sindur.

Spec : FF 50 / FL 25

Volume Average : 8.500 – 11.000 M2



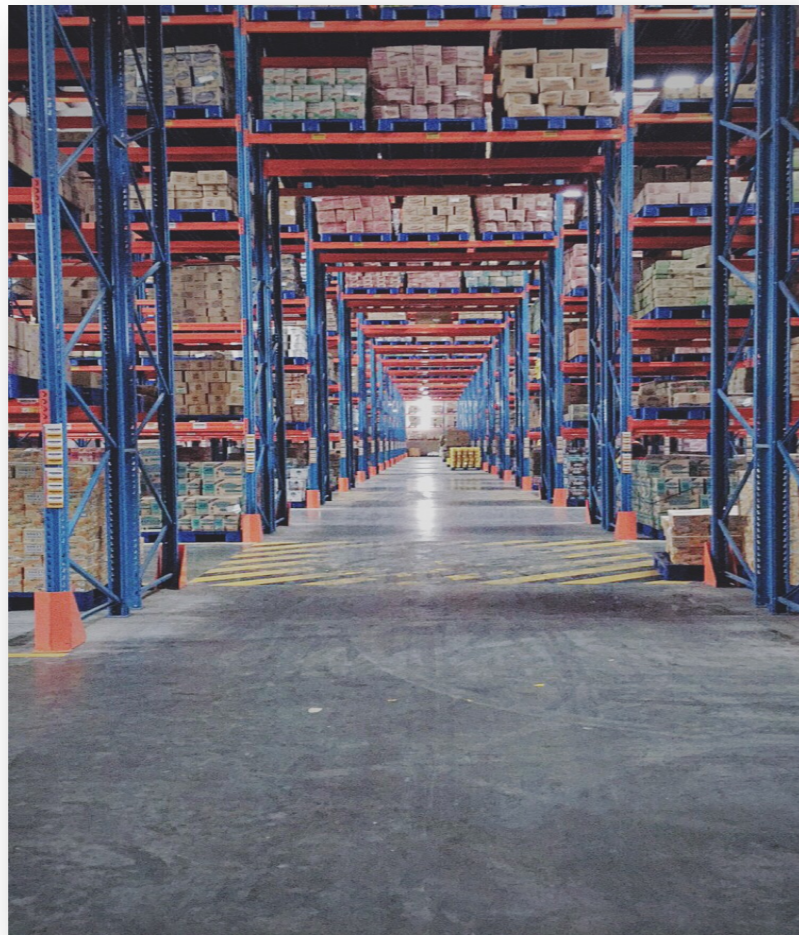
Project : GUDANG GARAM, SURABAYA
Material : Chapdur ex. Sika
Category : Superflat FF 50
Volume : 25.000 m2



PROYEK : KAMADAJA MEDAN
Material : Chapdur Natural ex. Sika
Category : Superflat > FF 50
Volume : 15.000 m2



Project : Gudang Cimanggis (Wings food / Sayap Mas Utama)
Material : Chapdur Natural ex. Fosroc
Category : Superflat > FF 75
Volume : -





Superflat Floor Specialist

ASHFORD
FORMULA™

THANK YOU & HAVE A NICE DAY.